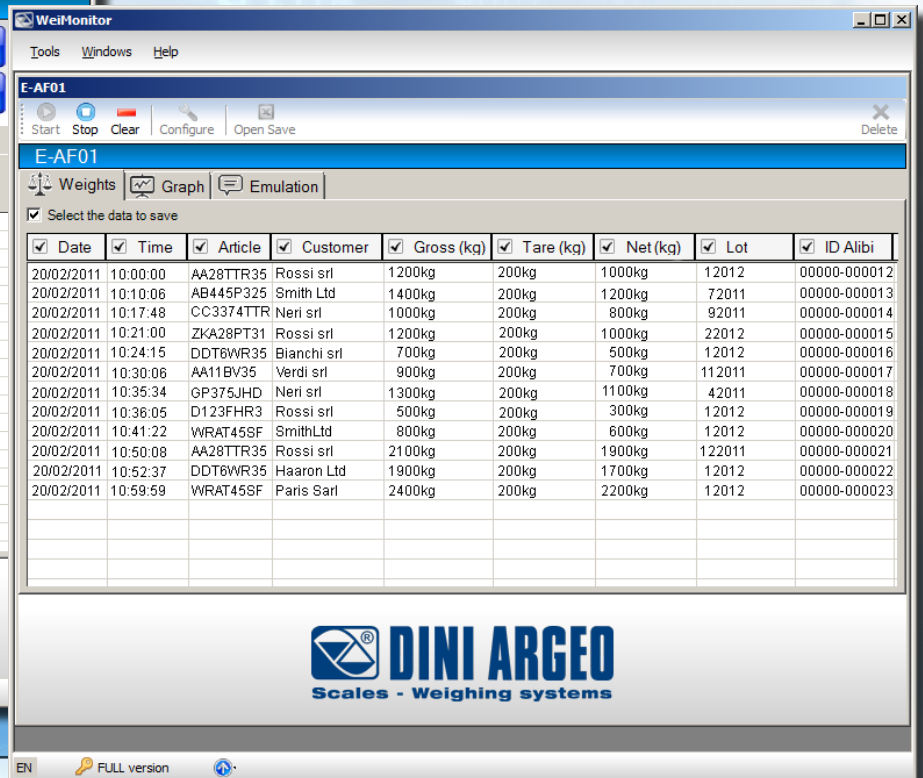
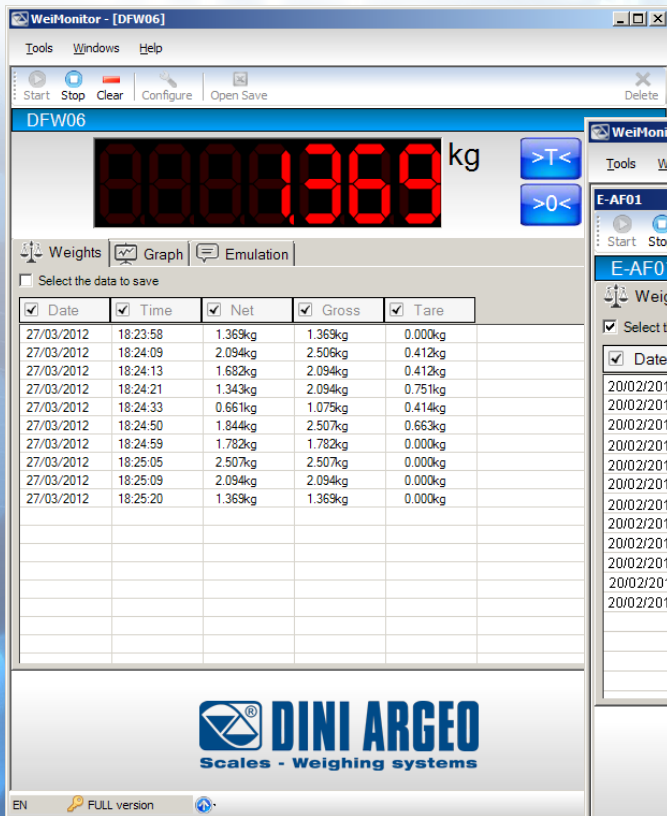


WeiMonitor

Software for managing the weighs obtained with Dini Argeo scales

WeiMonitor is the PC program which allows to monitor and record in real time all the weighs made on the connected scale, storing them in a text or Excel file for further processing.



The strong points

Easy to configure

Thanks to the wizard, the user can install and configure WeiMonitor in a few simple steps.

Versatility

WeiMonitor can be used with all DFW, DGT, 3590E, and CPWE instruments, as well as crane scales, pallet truck scales, weighing forks etc.

Interactivity

WeiMonitor alerts the user directly on the scale if the data was recorded or not, allowing the use the scale far away from the PC, with wireless communication.

Customization

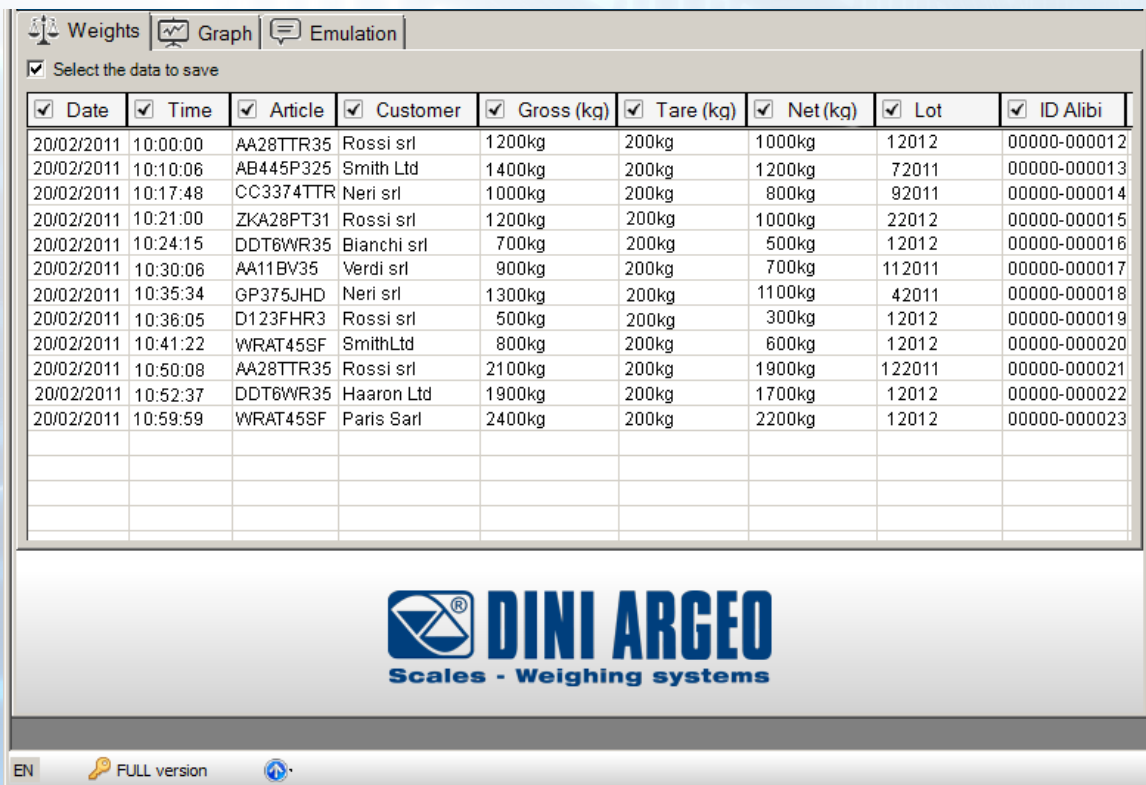
It is possible to customize the program by inserting your logo and easily change the user interface language.

WeiMonitor

Recording of the data from the scale

In the scale keyboard mode, the PC waits for the string to be stored, and interacts with the operator providing a message shown directly on the scale display, when the recording has been made.

In this way, it is possible to use WeiMonitor also from long distances, through Ethernet, WiFi, 868Mhz radio interface, or in areas with risk of explosion, via fiber optics or RS485.



The screenshot shows the main interface of the WeiMonitor software. At the top, there are tabs for 'Weights', 'Graph', and 'Emulation'. Below the tabs, there is a checkbox labeled 'Select the data to save' which is checked. A table displays recorded data with columns for Date, Time, Article, Customer, Gross (kg), Tare (kg), Net (kg), Lot, and ID Alibi. The DINI AR GEO logo and 'Scales - Weighing systems' text are centered below the table. At the bottom left, there is a language indicator 'EN' and a 'FULL version' icon.

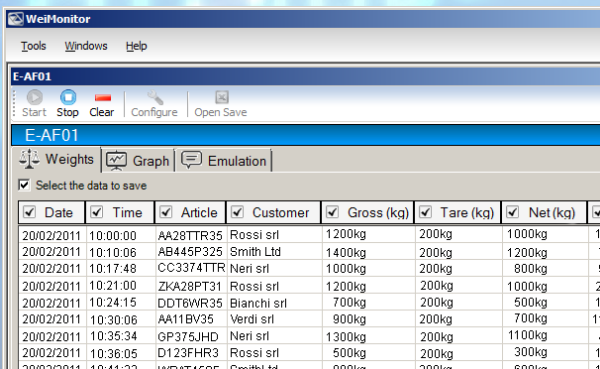
<input checked="" type="checkbox"/>	<input checked="" type="checkbox"/>	<input checked="" type="checkbox"/>	<input checked="" type="checkbox"/>	<input checked="" type="checkbox"/>	<input checked="" type="checkbox"/>	<input checked="" type="checkbox"/>	<input checked="" type="checkbox"/>	<input checked="" type="checkbox"/>
Date	Time	Article	Customer	Gross (kg)	Tare (kg)	Net (kg)	Lot	ID Alibi
20/02/2011	10:00:00	AA28TTR35	Rossi srl	1200kg	200kg	1000kg	12012	00000-000012
20/02/2011	10:10:06	AB445P325	Smith Ltd	1400kg	200kg	1200kg	72011	00000-000013
20/02/2011	10:17:48	CC3374TTR	Neri srl	1000kg	200kg	800kg	92011	00000-000014
20/02/2011	10:21:00	ZKA28PT31	Rossi srl	1200kg	200kg	1000kg	22012	00000-000015
20/02/2011	10:24:15	DDT6WR35	Bianchi srl	700kg	200kg	500kg	12012	00000-000016
20/02/2011	10:30:06	AA11BV35	Verdi srl	900kg	200kg	700kg	112011	00000-000017
20/02/2011	10:35:34	GP375JHD	Neri srl	1300kg	200kg	1100kg	42011	00000-000018
20/02/2011	10:36:05	D123FHR3	Rossi srl	500kg	200kg	300kg	12012	00000-000019
20/02/2011	10:41:22	WRAT45SF	SmithLtd	800kg	200kg	600kg	12012	00000-000020
20/02/2011	10:50:08	AA28TTR35	Rossi srl	2100kg	200kg	1900kg	122011	00000-000021
20/02/2011	10:52:37	DDT6WR35	Haaron Ltd	1900kg	200kg	1700kg	12012	00000-000022
20/02/2011	10:59:59	WRAT45SF	Paris Sarl	2400kg	200kg	2200kg	12012	00000-000023

It is possible to add WeiMonitor in the list of the autorun programs, by starting it in icon mode so that it does not interfere with the operations carried out on a PC.



Recording data mode

The recording data is divided into columns and, in combination with 3590E and CPWE indicators, these can be completely customized.



This screenshot shows a smaller version of the WeiMonitor software interface, similar to the one above, but with a different window title 'WeiMonitor' and a menu bar 'Tools Windows Help'. It also shows the 'Select the data to save' checkbox and the data table with columns for Date, Time, Article, Customer, Gross (kg), Tare (kg), Net (kg), and Lot.

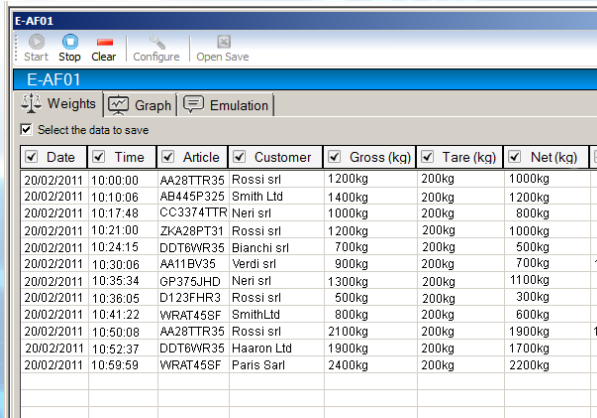


	A	B	C	D	E	F	G	H
1	Date	Time	Article	Customer	Gross (kg)	Tare (kg)	Net (kg)	Lot
2	20/02/2011	10:00:00	AA28TTR35P	Rossi srl	1200	200	1000	012012
3	21/02/2011	10:10:06	AB445P325L	Smith Ltd	1400	200	1200	072011
4	22/02/2011	10:17:48	CC3374TTR	Neri srl	1000	200	800	092011
5	23/02/2011	10:21:00	ZKA28PT31	Rossi srl	1200	200	1000	022012
6	24/02/2011	10:24:15	DDT6WR35P	Bianchi srl	700	200	500	012012
7	25/02/2011	10:30:06	AA11BV35P	Verdi srl	900	200	700	112011
8	26/02/2011	10:35:34	GP375JHDU	Neri srl	1300	200	1100	042011
9	27/02/2011	10:35:05	D123FHR34	Rossi srl	500	200	300	012012
10	28/02/2011	10:41:22	WRAT45SFF	Smith Ltd	800	200	600	012012
11	01/03/2011	10:50:08	AA28TTR35P	Rossi srl	2100	200	1900	122011
12	02/03/2011	10:52:37	DDT6WR35P	Haaron LT	1900	200	1700	012012
13	03/03/2011	10:59:59	WRAT45SFF	Paris Sarl	2400	200	2200	012012

WeiMonitor

Keyboard emulation

In both PC keyboard and scale keyboard modes, one can activate the writing emulation function, which allows to enter the data directly in the opened Windows application, in the location of the cursor. The keyboard emulation function does not exclude the saving of weighs.

Date	Time	Article	Customer	Gross (kg)	Tare (kg)	Net (kg)	Lot
20/02/2011	10:00:00	AA28TTR35	Rossi srl	1200kg	200kg	1000kg	012012
20/02/2011	10:10:06	AB445P325	Smith Ltd	1400kg	200kg	1200kg	072011
20/02/2011	10:17:48	CC3374TTR	Neri srl	1000kg	200kg	800kg	092011
20/02/2011	10:21:00	ZKA28PT31	Rossi srl	1200kg	200kg	1000kg	022012
20/02/2011	10:24:15	DDT6WR35	Bianchi srl	700kg	200kg	500kg	012012
20/02/2011	10:30:06	AA11BV35	Verdi srl	900kg	200kg	700kg	112011
20/02/2011	10:35:34	GP375JHD	Neri srl	1300kg	200kg	1100kg	042011
20/02/2011	10:36:05	D123FHR3	Rossi srl	500kg	200kg	300kg	012012
20/02/2011	10:41:22	WRAT45SF	Smith Ltd	800kg	200kg	600kg	012012
20/02/2011	10:50:08	AA28TTR35	Rossi srl	2100kg	200kg	1900kg	122011
20/02/2011	10:52:37	DDT6WR35	Haaron Ltd	1900kg	200kg	1700kg	012012
20/02/2011	10:59:59	WRAT45SF	Paris Sarl	2400kg	200kg	2200kg	012012

12. VESSEL	13. PORT OF LOADING	14. SERVICE TYPE
15. PORT OF DISCHARGE	16. PLACE OF DELIVERY	17. MODE OF TRANSPORT
PARTICULARS FURNISHED BY THE MERCHANT		
18. Marks and Cont. No.	19. No. of Packages	20. DESCRIPTION OF GOODS
		21. GROSS WEIGHT, KG
		22. MEASURE, M3
		2400

Transport document

WeiMonitor

	A	B	C	D	E	F	G	H
1	Date	Time	Artlice	Customer	Gross (kg)	Tare (kg)	Net (kg)	Lot
2	20/02/2011	10:00:00	AA28TTR35P	Rossi srl	1200	200	1000	012012
3	21/02/2011	10:10:06	AB445P325L	Smith Ltd	1400	200	1200	072011
4	22/02/2011	10:17:48	CC3374TTR	Neri srl	1000	200	800	092011
5	23/02/2011	10:21:00	ZKA28PT31	Rossi srl	1200	200	1000	022012
6	24/02/2011	10:24:15	DDT6WR35P	Bianchi srl	700	200	500	012012
7	25/02/2011	10:30:06	AA11BV35P	Verdi srl	900	200	700	112011
8	26/02/2011	10:35:34	GP375JHDU	Neri srl	1300	200	1100	042011
9	27/02/2011	10:35:05	D123FHR34	Rossi srl	500	200	300	012012
10	28/02/2011	10:41:22	WRAT45SFF	Smith Ltd	800	200	600	012012
11	01/03/2011	10:50:08	AA28TTR35P	Rossi srl	2100	200	1900	122011

Weighs' backup in Excel file



Management of approved scales

Thanks to the alibi memory integrated inside the indicator, it is possible to record each weigh with its own ID alibi, for subsequent verification in applications for legal for trade use.



Customization of the software

The program offers an area for entering your logo and your data, always active in the main screen of the program.

